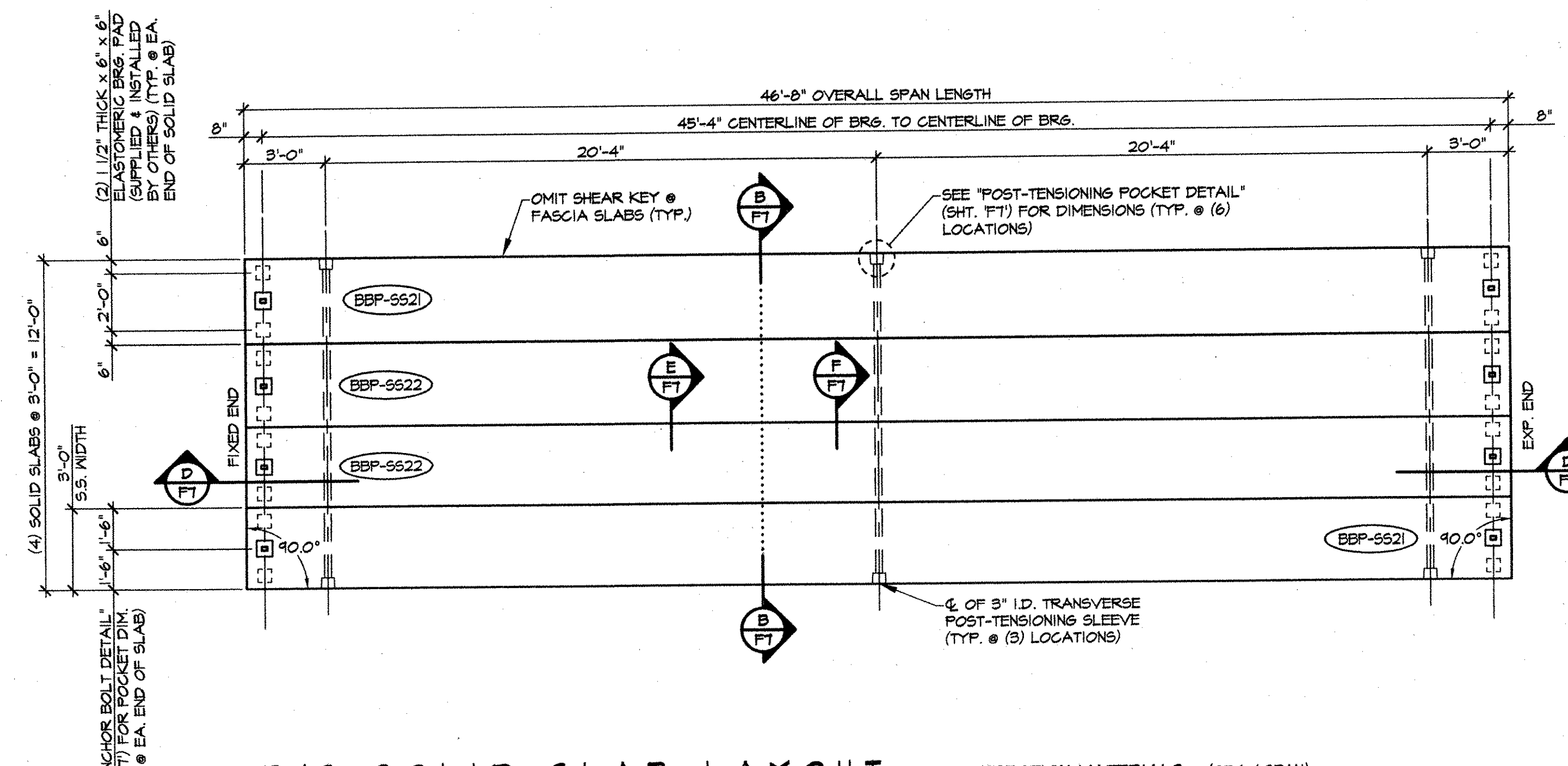


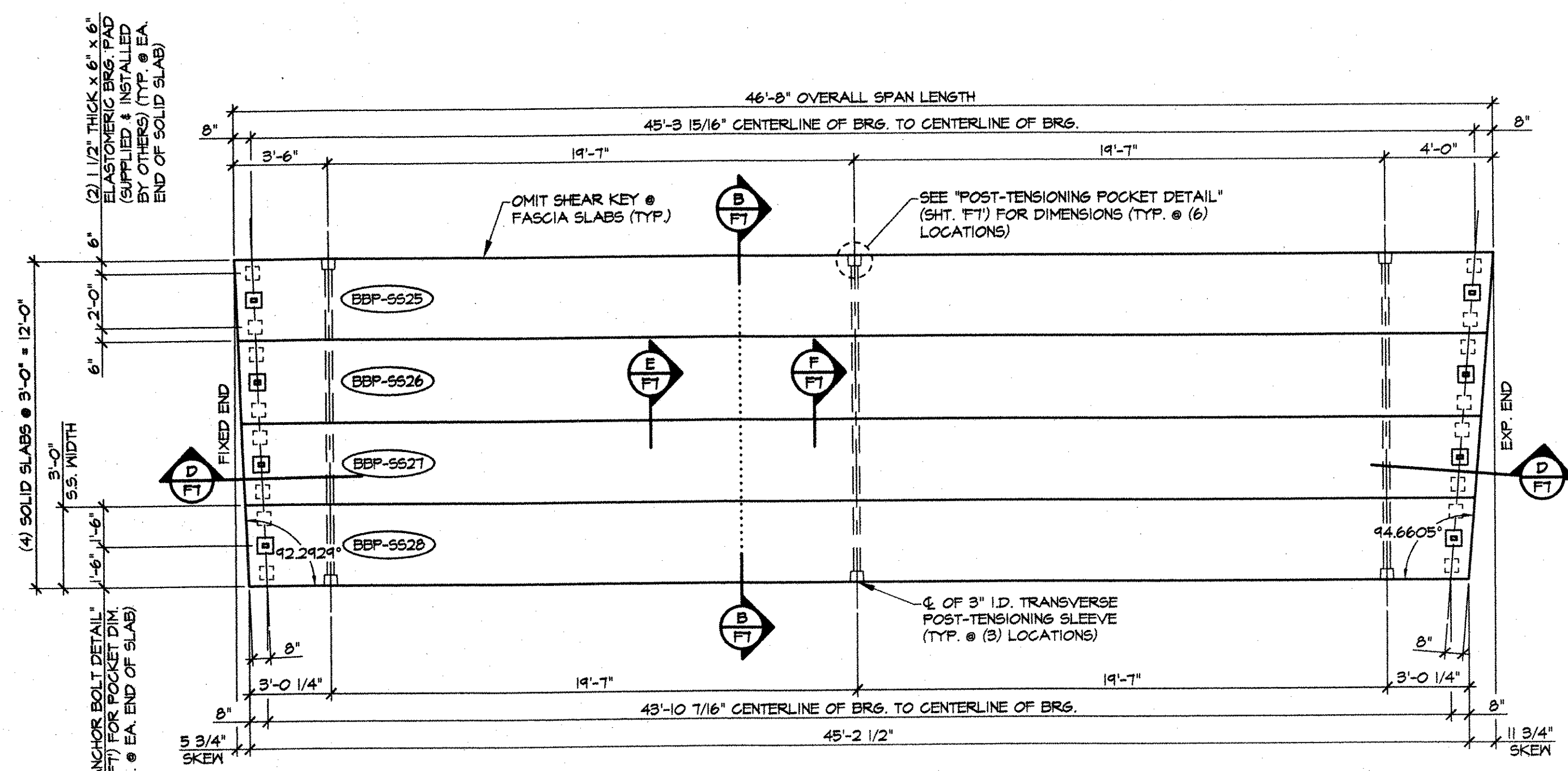
**P/S SOLID SLAB LAYOUT**  
SPAN 6  
1/4" = 1'-0"

- ERECTION MATERIALS (QTY. / SPAN)**
- (6) EM-1 [E. WASHER 3/4"x5"x5" W/ 2" HOLE]
  - (6) SINGLE USE STRESSING CHUCK
  - (3) 1/2" x 14'-4" POLYSTRAND
  - (16) 1/2"x6"x6" ELASTOMERIC BEARING PAD (SUPPLIED & INSTALLED BY OTHERS)
  - (8) 1/4" x 1'-10" ANCHOR BOLT (GALV.) W/ HEAVY NUT (GALV.)
  - (8) EM-3 [E. WASHER 3/4"x5"x5" W/ 1/2" HOLE]



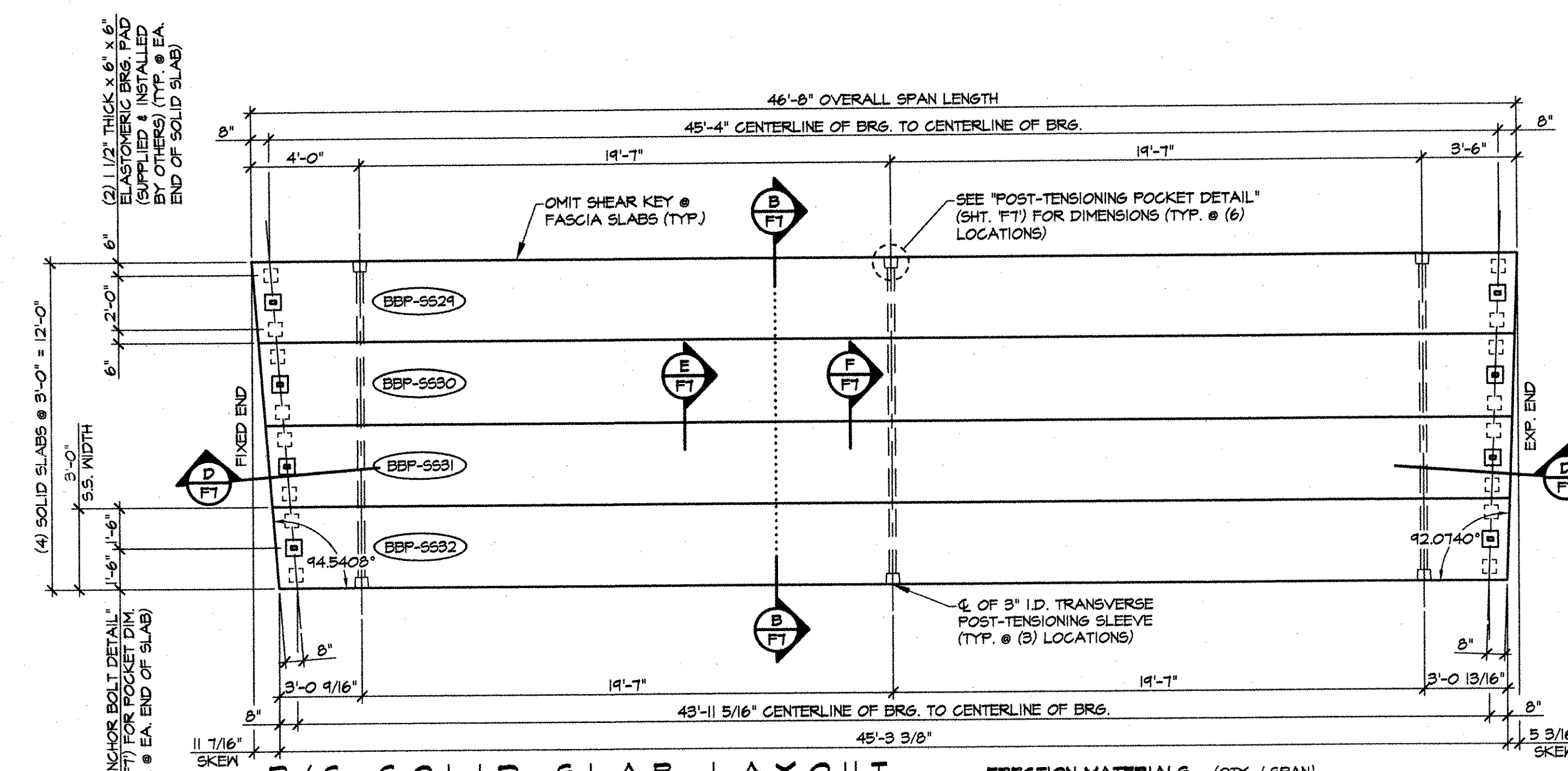
**P/S SOLID SLAB LAYOUT**  
SPANS 7-10, 21, & 25-36  
1/4" = 1'-0"

- ERECTION MATERIALS (QTY. / SPAN)**
- (6) EM-1 [E. WASHER 3/4"x5"x5" W/ 2" HOLE]
  - (6) SINGLE USE STRESSING CHUCK
  - (3) 1/2" x 14'-4" POLYSTRAND
  - (16) 1/2"x6"x6" ELASTOMERIC BEARING PAD (SUPPLIED & INSTALLED BY OTHERS)
  - (8) 1/4" x 1'-10" ANCHOR BOLT (GALV.) W/ HEAVY NUT (GALV.)
  - (8) EM-3 [E. WASHER 3/4"x5"x5" W/ 1/2" HOLE]



**P/S SOLID SLAB LAYOUT**  
SPAN 19  
1/4" = 1'-0"

- ERECTION MATERIALS (QTY. / SPAN)**
- (6) EM-1 [E. WASHER 3/4"x5"x5" W/ 2" HOLE]
  - (6) SINGLE USE STRESSING CHUCK
  - (3) 1/2" x 14'-4" POLYSTRAND
  - (16) 1/2"x6"x6" ELASTOMERIC BEARING PAD (SUPPLIED & INSTALLED BY OTHERS)
  - (8) 1/4" x 1'-10" ANCHOR BOLT (GALV.) W/ HEAVY NUT (GALV.)
  - (8) EM-3 [E. WASHER 3/4"x5"x5" W/ 1/2" HOLE]



**P/S SOLID SLAB LAYOUT**  
SPAN 20  
1/4" = 1'-0"

- ERECTION MATERIALS (QTY. / SPAN)**
- (6) EM-1 [E. WASHER 3/4"x5"x5" W/ 2" HOLE]
  - (6) SINGLE USE STRESSING CHUCK
  - (3) 1/2" x 14'-4" POLYSTRAND
  - (16) 1/2"x6"x6" ELASTOMERIC BEARING PAD (SUPPLIED & INSTALLED BY OTHERS)
  - (8) 1/4" x 1'-10" ANCHOR BOLT (GALV.) W/ HEAVY NUT (GALV.)
  - (8) EM-3 [E. WASHER 3/4"x5"x5" W/ 1/2" HOLE]

J.P. CARRARA & SONS, INC.  
NOV 12 2003  
ISSUED FOR PRODUCTION

APPROVAL STAMP:  RECEIVED CK'D BY <i>MJM</i> OK'D BY _____ NOV 14 2003 RESUBMIT _____ APPROVED _____ BY _____ DATE 12/3/03	<b>J.P. CARRARA &amp; SONS INC.</b> Precast & Prestress Manufacturer <small>264 ONE STR. MOULBURY, VERMONT 05753 Phone:(802)388-6361 Fax:(802)388-0010</small>		<b>KUBRICKY CONSTRUCTION CORP.</b> CONTRACTOR <small>GLENS FALLS, NEW YORK</small>	
	STATE OF VERMONT AGENCY OF TRANSPORTATION		DATE: SEPT. 26, 2003 SCALE: NOTED	
	TOWN OF COLCHESTER PROJECT NUMBER: STP BIKE (48)		CHKD: _____ DFTM: B.L. JOB NO: 23164-03	
	<b>P/S SOLID SLAB LAYOUTS</b>		DWG. NO: <b>F9</b> <small>097</small>	